

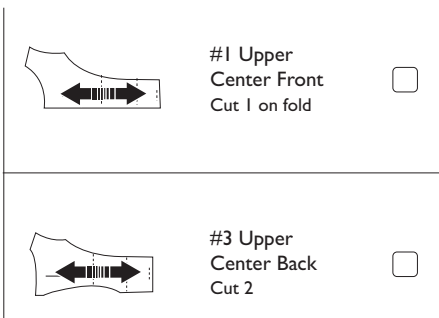
To Splice a Pattern Piece

If you have a pattern piece that is too large for the cutting mat, the pattern piece will need to be projected as multiple frames. This is called "Splicing".

Note! A spliced piece cannot be mirrored.

Note! No other pattern pieces can be in the workspace at the same time as a spliced pattern piece.

The spliced pattern pieces in the Ditto app are marked with a red arrow that indicates the direction of the splicing. The direction of the splicing can be vertically, horizontally or in multiple directions.



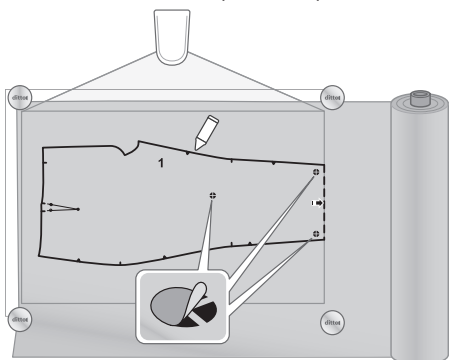
Note! When a large amount of fabric is needed, make sure to fold the excess fabric on the table or drape it onto a chair. If the fabric is draping down over the edge of the table the weight of the excess fabric can pull the complete fabric piece down.

Note! Always use fabric weights when splicing a pattern piece to hold the fabric in place.

1. Add a pattern piece. Refer to steps 1-5 "To Select a Pattern Piece" in the Instructions for Use manual.
2. Press "Send to projector" to project the pattern pieces. Refer to steps 1-4 in "To Project the Pattern" in the Instructions for Use manual.

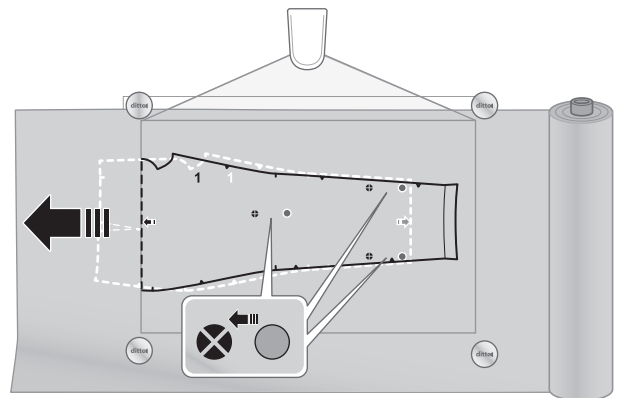
Note! Red arrows will appear on the spliced pattern piece in the workspace to indicate direction of the splicing. Make sure that there is enough fabric beyond the arrows to account for the entire pattern piece.

3. Mark the projected red splice targets with the provided target stickers. Do not remove the target stickers until the entire pattern piece has been traced.



Note! The right scroll bar shows a Splicing Map of the pattern that indicates which splice frame is being projected.

4. Use a temporary fabric marker to transfer any markings from the pattern to the fabric.
5. Use the rotary cutter or a pair of scissors to cut the fabric.
6. When the first part of the pattern piece is cut or traced, tap the red arrows in the workspace to move the pattern piece to the next frame.
7. Send the pattern to the projector.



8. Follow the arrow directions to reposition the fabric.
9. Align pattern lines and target stickers with new projected targets.

To Splice a Pattern Piece in Multiple Directions

Note! If you are doing a multi-directional spliced piece, we recommend that you trace the entire projected piece before cutting your fabric.

Note! Always use fabric weights when splicing a pattern piece to hold the fabric in place.

1. Add a pattern piece. Refer to steps 1-5 "To Select a Pattern Piece" in the Instructions for Use manual.
2. Press "Send to projector" to project the pattern pieces. Refer to steps 1-4 in "To Project the Pattern" in the Instructions for Use manual.

Note! Red arrows will appear on the spliced pattern piece in the workspace to indicate direction of the splicing. Make sure that there is enough fabric beyond the arrows to account for the entire pattern piece.

3. Mark the projected red splice targets with the provided target stickers. Do not remove the target stickers until the entire pattern piece has been traced.

Note! The right scroll bar shows a Splicing Map of the pattern that indicates which splice frame is being projected.

4. Use a temporary fabric marker to transfer any markings from the pattern to the fabric.
5. Use the rotary cutter or a pair of scissors to cut the fabric.
6. When the first part of the pattern piece is cut or traced, tap the red arrows in the workspace to move the pattern piece to the next frame.
7. Send the pattern to the projector.
8. Follow the arrow directions to reposition the fabric.
9. Align pattern lines and target stickers with new projected targets.

